

Assessing the effectiveness of PCM: Increasing Client Knowledge of HIV Prevention

Graduate Research Assistant – Jennifer Felderman, BS

Prevention Coordinator – Victoria Schweig, BA

Camino de Vida Center for HIV Services

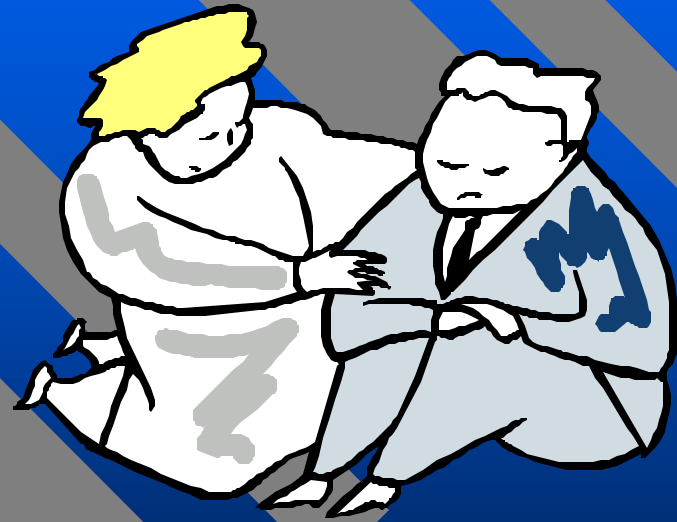
Prevention Case Management (PCM)

- Client-centered
- Individual level counseling
- On-going basis
- Focuses on risk-reduction
- HIV, STD and Hepitities education
- Develop risk-reduction plan
- Empowers the client



Who is a candidate for PCM?

- HIV + individuals
- High-risk negatives
- Partners of clients
- IDUs



Purpose and Method of Evaluation

- Develop an assessment tool to evaluate PCM
- Quasi-experimental pre/post design
 - Pre assessment measures baseline knowledge
 - Post assessment measures knowledge gain
 - Comparison group





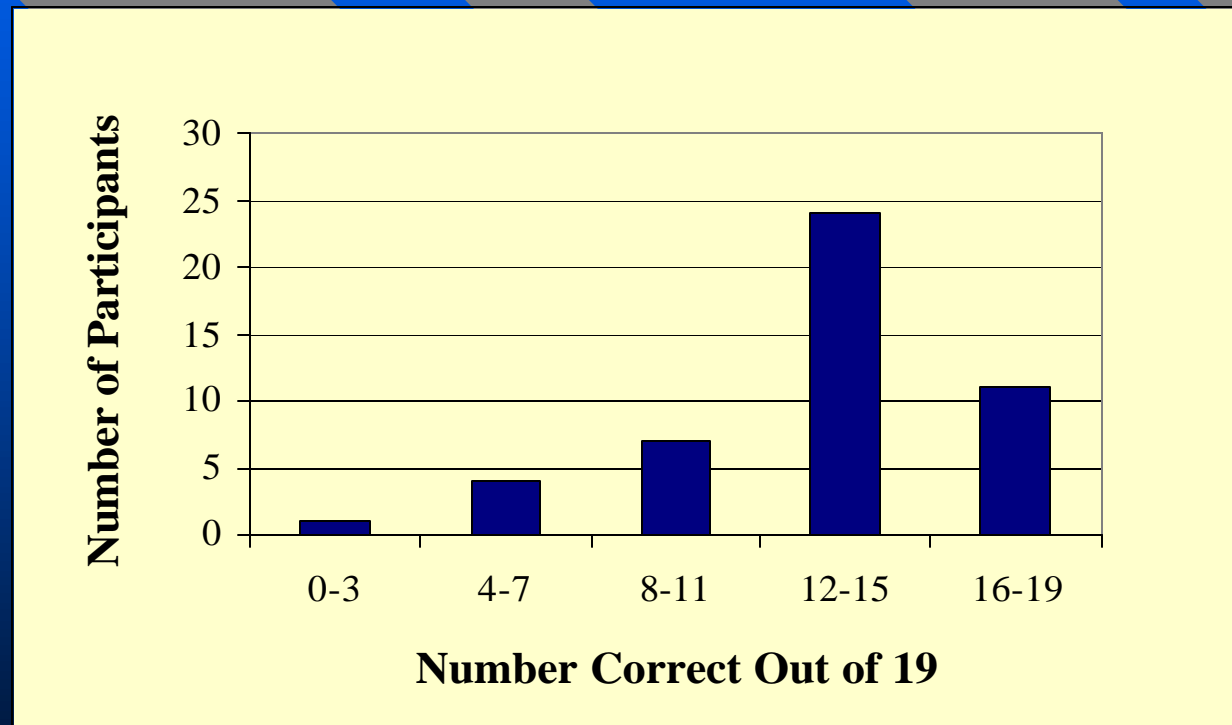
Preliminary Results

Demographics: Intervention Group

Table 1. Demographic Description of Intervention Group

| | Frequency | Percent |
|------------------------------|--------------------------|--------------------|
| Sample Size | 47 | |
| Sex/Gender | | |
| Male | 31 | 66% |
| Female | 15 | 32% |
| Transgender | 1 | 2% |
| Age | Mean: 34 Std. Dev. 12 | Min. 18 Max. 60 |
| Ethnicity | | |
| Hispanic | 28 | 60% |
| White | 15 | 32% |
| Black | 1 | 2% |
| Other/mixed race | 3 | 6% |
| HIV Status | | |
| HIV positive, not AIDS | 24 | 51% |
| HIV positive, status unknown | 3 | 6% |
| AIDS | 7 | 15% |
| HIV negative | 12 | 26% |
| Status unknown | 1 | 2% |
| Language | | |
| English | 35 | 75% |
| Spanish | 12 | 25% |

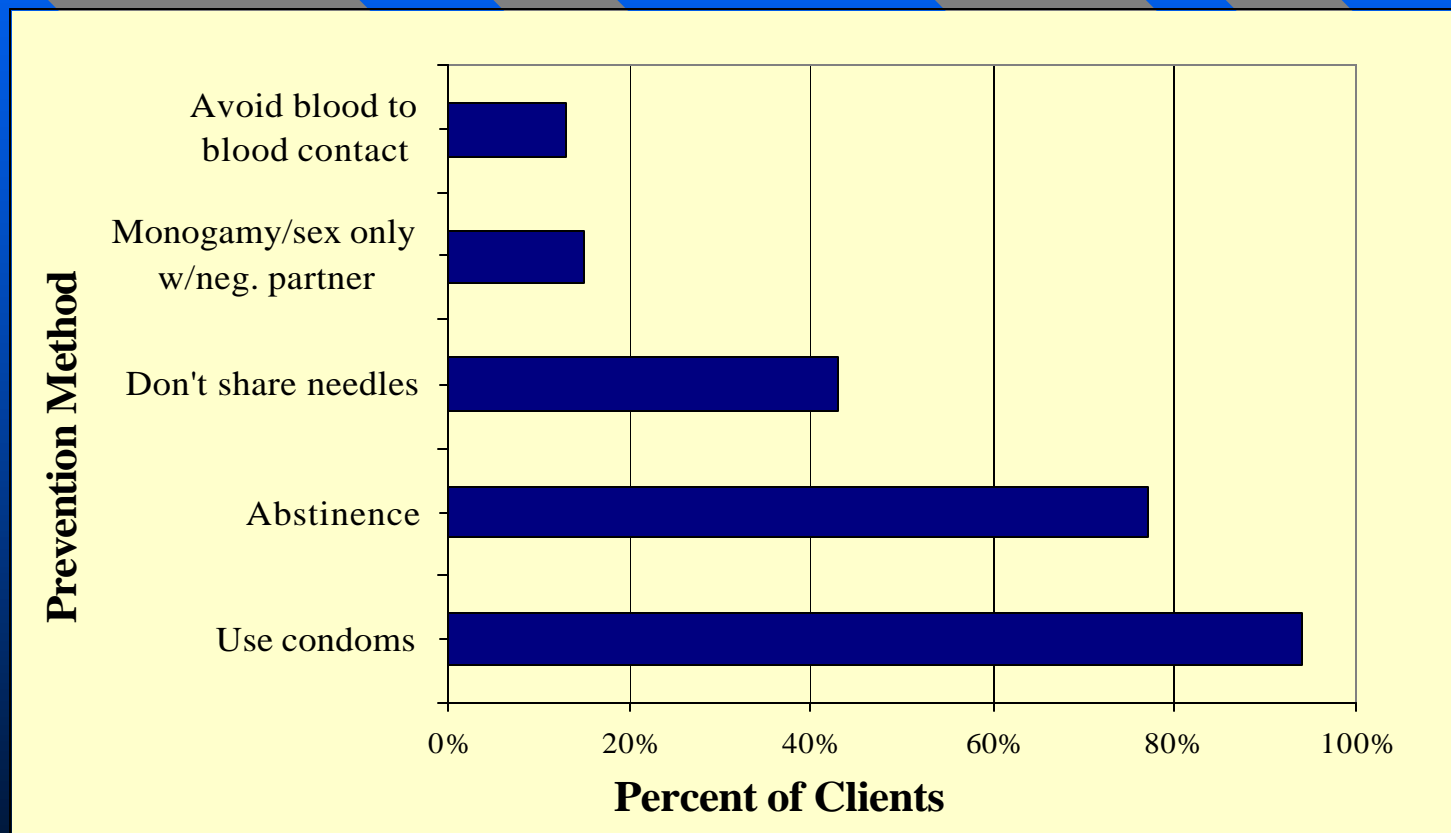
Number of Participants with Correct Responses (n = 47)



Assessment Questions

- Most problematic questions
 - Can HIV be transmitted through saliva?
 - Can HIV be transmitted through breast milk?
 - Can you get HIV from a toilet seat?
- Least problematic questions
 - Can HIV be transmitted through blood?
 - Can HIV be transmitted through semen?
 - Can you get HIV from sharing needles?
 - Can a mother give HIV to her baby?

Top Five Responses to Prevent Getting or Spreading HIV (n = 47)



Limitations

- The “n” is small
- Attrition is reducing the post-test numbers
 - PCM is voluntary
 - Client mobility
 - PCM is not appropriate for some clients
- The intervention varies based on client needs
 - It is important to be client centered, on the other hand, it makes it difficult for researchers
- Comparison group may not happen
 - Paperwork and time (assessment/consent) may deter individuals who walk in



Thank you!